

Production of this brochure has been made possible
by a generous financial contribution from



The Frontenac Arch is the ancient granite ridge linking the Adirondack Mountains to the Canadian Shield. The St. Lawrence River Valley floods across the Arch, linking Great Lakes and central North America to the Atlantic Coast. The result—the Frontenac Arch is a North American crossroads for migration and settlement corridors for forest regions, wildlife and humankind.



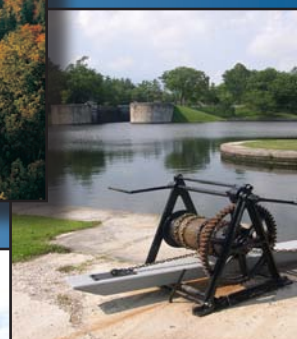
Here is a truly special landscape: delightfully natural, culturally vibrant, historically rich. The Thousand Islands, the southern half of the Rideau Canal, much of the Land O'Lakes, the upper St Lawrence River; and the towns, villages and farms are the mosaic character of this globally significant region.



Five forest regions merge and intermingle on the Frontenac Arch—perhaps the most bio-diverse region in Canada. Numerous plants, fish, birds and animals are species at risk, with refuge here because their essential habitats still exist. Yet, within a half days drive of half of the population of Canada, FAB has over 40% forest cover and 30% blessed with lakes, rivers and streams—over 70% as a green and blue oasis—yet steeped in the story of our nation. A rich heritage—with Canada's first glassworks, Ontario's oldest standing stone bridge, Upper Canada's first iron foundry and First Nations' settlements dating back to just after the last ice age.

The Frontenac Arch Biosphere is one of 15 Biosphere Reserves in Canada, among over 550 in 107 countries—a global network of globally significant landscapes celebrated as UNESCO World Biospheres, protecting globally significant regions of biodiversity through support and education towards sustainable community development. Biospheres have no powers or authority—laws of the regions apply. Rather, it's a community dedication to the four pillars of sustainability—healthy environment, culture, society and economy.

There are two UNESCO designations here: the Frontenac Arch as a World Biosphere Reserve, and the Rideau Canal World Heritage Site. There are just a handful of instances worldwide where such dual designations are found.



VISION

The Frontenac Arch Biosphere will be known by all who live and visit here as a world-class example of a successful sustainable community. We will celebrate our natural, economic and human qualities and forge a new way of working, living and growing together.

Frontenac Arch
Biosphere Reserve
19 Reynolds Road,
Lansdowne Ontario
K0E 1L0
613-659-4824
www.fabr.ca

www.fabr.ca

Frontenac Arch Biosphere

The Biosphere's strategic priority is sustainable community development: social, cultural, economic and environmental health. The Biosphere partnership of over 80 community and government organizations pools capacity and ideas for networks and projects. A strong communications program will build pride in our region. Our knowledge and experience will be shared with other Biospheres in Canada and abroad.

Local Flavours: a network of more than 100 local food producers, retailers, and food services, building a strong rural community.

Community Atlas: a community resource of information—maps of natural history, built and cultural heritage, land use, trails, artists and artisans, Local Flavours members, stories, illustrations, activities—to serve educators, planners, economic development strategies, conservation initiatives and many other uses.

Explore the Arch: a project to map and web-publish all types of all trails, including cultural and culinary routes, plus supplies, services, and accommodation, over a 3,500 sq. km. area, laying the framework for both a new experience and new sustainable development for the region. The Biosphere Trails Council is a collaborative of over 30 regional trails organizations—an Ontario Trails Council member.

Cultural Network: a database of hundreds of artists and artisans will help identify this region and build towards a creative economy.

Educators Network: a network of 15 natural and cultural history program providers, with 3 school boards, builds awareness and knowledge about sustainable communities.

Sustainable Tourism: now the mainstream tourism, the Frontenac Arch Biosphere poised as a world leader through educational workshops, Sustainable Tourism Charter development and product innovation.

Conservation Partnerships: government and non-government partnerships build success stories in ecological study, additions of conservation land to parks, and valuable data bases for land use planners.

State of the Biosphere Report: partnership with Queen's University, over a five period will develop a measures of the success and needs in sustainability of this region—a valuable tool for all concerned for the region's cultural, social, environmental and economic condition.

A TEN YEAR VIEW...

Our region is a recognized model of sustainable living in Canada and abroad.

Our residents are healthy, creative, ecologically aware.

We are proud, responsible stewards of land and heritage.

Our water is clean.

We have a self-sustaining food supply.

Our network of trails is unsurpassed.

Our farms, forests, lakes, and wetlands are healthy.

There is on-line access to a data base on all our region's resources.

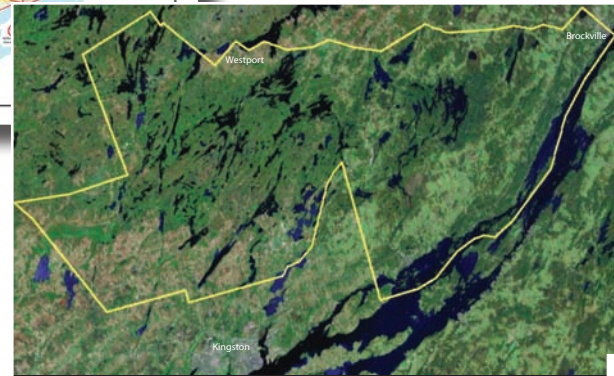
The Biosphere organization is financially self-sustaining and its network of partners is thriving.



For a complete picture of the Biosphere's activities and programs, visit our www.fabr.ca website. The FAB Action Plan 2009-2012, programs and links to partners is a comprehensive overview.

The Frontenac Arch Biosphere is an incorporated, not-for-profit organization, with a volunteer Board of Directors representing the community.

To volunteer, become a member or support the Biosphere, please - get in touch!



VALUES:
Honesty. Integrity. Transparency.
Respect for people and nature
A belief that local decisions should be made by local people
Consensus-building, not advocacy
Sustainability is a balanced approach

FRONTENAC ARCH BIOSPHERE
19 Reynolds Road
Lansdowne ON K0E 1L0

www.fabr.ca info@fabr.ca (613) 659-4824

