

Frontenac Arch Region
**Conservation Strategy Info
Sharing Catalogue**



Updated February 21, 2011

Conservation Strategy Info Sharing Catalogue

TABLE OF CONTENT

CONSERVATION AUTHORITIES	
Cataraqui Region Conservation Authority.....	3
Rideau Valley Conservation Authority.....	4
STEWARDSHIP COUNCILS	
Frontenac County Stewardship Council.....	5
Leeds & Grenville Stewardship Council.....	6
LAND TRUSTS	
Land Conservancy for Kingston, Frontenac, Lennox & Addington.....	7
Rideau Waterway Land Trust.....	8
Thousand Islands Land Trust (Clayton, NY).....	9
Thousand Islands Watershed Land Trust.....	10-11
Nature Conservancy of Canada.....	12
GOVERNMENT	
Federal	
Parks Canada.....	13
St. Lawrence Islands National Park.....	14
Rideau Canal National Historic Site of Canada.....	15
Provincial	
Ontario Heritage Trust.....	16
Ontario Parks.....	17
Charleston Provincial Park.....	18
Frontenac Provincial Park.....	19
Murphy's Point Provincial Park.....	20
Ministry of Natural Resources- Kemptville.....	21
Ministry of Natural Resources - Southern Science and Information.....	22
Ministry of Natural Resources - Southern Region Planning Unit.....	23
OTHER ORGANIZATIONS	
Algonquin to Adirondack Conservation Association	24
Ducks Unlimited.....	25
Eastern Ontario Model Forest.....	26
Friends of Charleston Lake Park.....	27
Friends of Murphy's Point Provincial Park.....	28
Frontenac Arch Biosphere Reserve.....	29
Kingston Field Naturalists.....	30
Ontario Nature.....	31
Queen's University Biology Station.....	32
Queen's University Environmental Studies.....	33
South Frontenac Natural Environmental Committee.....	34
CONSERVATION STRATEGY ADMINISTRATIVE AREAS.....	35

Cataraqui Region Conservation Authority

<http://www.cataraqueiregion.on.ca>

Vision: That the natural environment of the Cataraqui Region Conservation Authority watersheds will be conserved, that degraded natural resources will be restored, that our regional diversity will be valued by the watershed residents, and that the public will understand the role that everyone needs to play in resource management and resource enjoyment.

Acquisition/securement priorities

- Protect land from being developed (e.g. flood plains, wetlands).
- Water management.
- Preserve significant natural features such as PSWs and ANSIs or to conserve wildlife habitat.
Provide public access to the natural environment.

Rideau Valley Conservation Authority

<http://www.a2alink.org/index.html>

Contact information: Kristy Giles
kristy.giles@rvca.ca
613-692-3571 ext 1178

PO Box 599
3889 Rideau Valley Dr.
Manotick, ON K4M 1A5

Mission: To undertake environmental protection programs today that will leave a legacy of clean water, natural shorelines and sustainable land use for future generations and to have clean water, natural shorelines and sustainable land use throughout the Rideau Valley watershed.

Vision: Our rivers, lakes, streams, groundwater and wetlands will be clean and sustainable, and our surface and groundwater reserves of water will be protected against overuse and from threat of contamination. Our water and related land areas will support diverse and healthy ecosystems and contribute to thriving and healthy economies and communities by supporting domestic, industrial, commercial, recreational and tourist opportunities.

Objectives & Criteria

- The primary purpose or reason for acquiring land will be the protection of natural areas performing natural functions integral to the health of the watershed.
- Our primary focus in managing conservation lands is on conservation objectives - protection, restoration and enhancement of conservation lands.
- We recognize the open space, public access, recreational and educational benefits to the community, however, our recreational role is unique and directed towards those activities that benefit from a location in the natural environment.

Acquisition/Securement Priorities

1. Ribbon of Life Lands

- shoreline wetlands
- floodplain lands and/or hazard lands
- waterfront open space/natural shorelines/riparian areas

2. Natural Areas Outside the Ribbon of Life

- surface water and ground water significance (source/recharge areas)
- other wetlands
- rare and endangered species/fish and wildlife

habitat

- forest land/natural areas (size, significance, representativeness)
- linkages from one public property to another

3. Regionally Significant Physical Attributes

- representative physiological areas/representative landscapes
- unique features/geological landforms (waterfall, gorges, escarpments, lookouts, etc.)

Tools, Resources & Capacities

- Forestry Dept.
- Workshop Maintenance

- Management Planning
- Fundraising

Current Major Stewardship Projects

- Shoreline Restoration
- Forestry Management & Tree Planting
- Conservation areas

- Monitoring
- Resource Management
- Habitat Features (boxes, snake cages, etc.)

Successful Projects

- Shoreline Restoration
- Forestry Management & Tree Planting
- Conservation areas

- Monitoring
- Resource Management
- Habitat Features (boxes, snake cages, etc.)

Frontenac County Stewardship Council

<http://www.ontariostewardship.org/councils/frontenac/>

Contact information:

Lesley Rudy (until July 1, 2011),
lesley.rudy@ontario.ca
(613) 531-5714

Cam McCauley (after July 3, 2011)
cam.mccauley@ontario.ca
(613) 531-5714

Vision: A green and healthy landscape for this and future generations.

Goal: To sustain all natural resources in Frontenac County through active collaboration with other organizations in the community.

Current Major Stewardship Projects

Lake plan inventory, fish habitat restoration (with CFWIP), individual stewardship plans for landowners, developing landowner extension services, developing Frontenac County stewardship plan, education award, septage haulage awareness, tree planting, Species at Risk awareness, curriculum unit on water, workshops and talks, etc., etc.!!

Successful Projects

Production of 'Naturally Rich Frontenacs' booklet, highgate creek wetland enhancement, septage haulage report, family fishing days, workshops, partnerships, etc., etc.

Privacy Issues

No major concerns.

Wish list

Looking to coordinate and partner more with local organizations.

Leeds & Grenville Stewardship Council

<http://www.ontariostewardship.org/councils/leeds>

Goal: To promote responsible land care and stewardship. We believe in educating and support people in making their own decisions

Priorities

- Healthy Aquatic Ecosystems
- Sustainable Forests
- Species at Risk
- Education and Awareness

Current Major Stewardship Projects

HEALTHY AQUATIC ECOSYSTEMS

Charleston Lake Watershed Stream
Restoration Projects
Gananoque Watershed Study
Buells Creek

SUSTAINABLE FORESTS

Bellamy To Irish Lake Connectivity Project
50 Million Tree Plant
Management Planning (MFTIP)

EDUCATION AND AWARENESS

Legacy Tree Project
Species at Risk Curriculum
Trails - Gananoque Provincial Wildlife Area
Irish Lake Conservation Club
Wood working for Wildlife

SPECIES AT RISK

Eastern (Black) Ratsnake
Bald Eagle Platform Partnership
Turtle Stewardship Initiative
Osprey Nesting Platforms
Lower Beverley Lake Park

Land Conservancy for Kingston, Frontenac, Lennox & Addington

<http://www.landconservancykfla.org>

Contact information: Mary Alice Snetsinger
ecoserv@kos.net
general inquiries: info@landconservancyKFLA.org
613-376-6916

P.O. Box 825
Main Post Office
Kingston ON K7L 4X6.

Mission: To preserve and protect natural sites and landscapes in Kingston and Frontenac and Lennox and Addington Counties.

Vision: To create a Land Conservancy that people throughout Frontenac and Lennox and Addington Counties will recognize as a trustworthy and far-sighted organization, preserving and protecting natural sites and landscapes in this area. The communities will see value in our goal of protecting representative natural habitats, supporting biodiversity and connecting natural areas across the counties, and will respect efforts to encourage land stewardship through cooperation with other environmental organizations and support for landowners. The Land Conservancy will be seen as a key partner in protecting the ecological integrity of this part of Ontario.

Acquisition/Securement Priorities

- To conserve and protect ecologically significant areas, flora and fauna.
- To conserve and enhance biological diversity.
- To undertake an ecological restoration of a natural environment as appropriate.
- To protect areas with unique or representative natural features or ecosystems.
- To protect areas that provide habitat to species of special concern or threatened or endangered species. To protect areas that provide habitat to species of special concern or threatened or endangered species. Identified under provincial or federal laws or by the Committee on the Status of Endangered Wildlife in Canada.
- To connect existing protected areas or expand a natural corridor.

Rideau Waterway Land Trust

<http://www.rwlt.org>

Contact information: Dave Walker (officially after April 1)

davew@rwlt.org

613-284-2010

Mission: To preserve important natural lands and habitat in the Rideau Corridor and foster a healthy future for our communities.

Vision: Nature has a future because our communities care.

Objectives & Criteria

We focus on the preservation of land that supports plants, animals and clean water.

Acquisition/Securement Priorities

Provincially significant wetlands, woodlands, species at risk habitat, highly visible landscapes that contribute to UNESCO World Heritage Site, and lands that have strong community support for preservation

Tools, Resources & Capacities

Our preference is fee simple acquisition, either donation or purchase, we maintain an office and 1.5 staff, have approximately 650 members and supporters and an annual operating budget of \$200,000 plus an annual capital budget of between \$200,000 and \$1,000,000

Current Major Stewardship Projects

Our stewardship activities are restricted to management of the lands we own (15) and conservation easements (3). Due to our members wishes we are starting to acquire lands that provide low impact recreational uses so we now maintain trails, parking lots etc.

Successful Projects

Most current (October 2010) the purchase of SugarBush Island in Lake Opinicon. Our highest profile property is the 275 acre Rock Dunder property at Morton developed with 7 km of trails and parking lots. Welcome about 5,000 people a year to this property.

Privacy Issues

None to speak of in terms of property. Our donor and other income tax related data is confidential

Wish list

We are always open to partnerships with like-minded organizations of similar capacities for land acquisition projects, especially low impact recreational lands. We do partner with other groups on stewardship, trail maintenance, etc. on our lands.

Thousand Islands Land Trust (Clayton, NY)

<http://www.tilandtrust.org>

Objectives & Criteria

Lands conserved may be:

- Habitat for threatened or endangered species
- Filters for clean water in watershed areas
- Important historic sites
- Scenic areas that define the character of the region
- Recreational lands that benefit the community
- Important for reasons personal to an individual owner

Thousand Islands Watershed Land Trust

<http://www.tiwlt.ca>

Contact information: Dann Michols
dannmichols@ripnet.com

Mission: to permanently protect land in the Thousand Islands watershed region through acquisition or conservation agreements, and to achieve good land management through stewardship agreements and education.

Vision: In undertaking the establishment and operation of the Land Trust, the Board and members have as a vision a significant region of land, defined by the water sources which flow into the St. Lawrence River in the Thousand Island area, with its diverse landscape of forests, islands, lakes wetlands and farms, preserved and protected while existing in harmony with human activities that respect and sustain its natural characteristics and resources.

Objectives & Criteria

To provide long term protection of ecologically significant habitat. Properties to be protected may contain representative species, rare or threatened flora or fauna, or corridors connecting protected areas.

Acquisition/Securement Priorities

Lands within the Frontenac Arch Natural Area, including lands adjacent to Charleston Lake Provincial Park, St. Lawrence Islands National Park, and in the Gananoque River waterway/corridor.

Tools, Resources & Capacities

We have the ability to protect lands through outright acquisition, conservation easement, and in partnership with government agencies and NGOs.

Current Major Stewardship Projects

The protection of lands in the Charleston Lake and Red Horse Lake areas, and in Gananoque River corridor.

Successful Projects

Metrics: Land Conservation Activities with which the TIWLT has been associated

Property	Instrument	Year	Size	Finances
Hill Island	Purchase – transfer to SLINP		8 acres	
Shire/McKillop	Easement	2002	100 acres	

Property	Instrument	Year	Size	Finances
Haskins	Purchase – transfer to CLPP		125 acres	\$5000
Fitzsimons Mountain/Jones Creek/Landon Bay	Purchase – transfer to SLINP		2166 acres	
Chris Smith: Grenadier Island	Purchase – transfer to SLINP		11 acres	
Bliss	Purchase – transfer to SLINP		100 acres	
Leakey: Landon Bay	Brokered - SLINP		125 acres	
Mackintosh	Easement	2009	47 acres	
Lost Bay	Collaboration with Nature Ontario	2009		\$5000
Island 78E	Purchase or donation?		0.5 acres	
Blueberry			0.25 acres	
Bell	Easement	2009		
Sheffield	Purchase/Transfer	2010		\$10000
TOTALS			2682 acres	\$20000

Nature Conservancy of Canada

<http://www.natureconservancy.ca>

Contact information:

Gary Bell
gary.bell@natureconservancy.ca
(613) 321-3559

Brenda Van Sleeuwen (Stewardship)
brenda.vansleeuwen@natureconservancy.ca
(613) 321-3583

35 Eglinton Ave West, Suite 400,
Toronto ON M4R 1A1
(416) 932-3200

Mission: To accomplish this mission, the Nature Conservancy of Canada will lead, innovate and use creativity in the conservation of Canada's natural heritage by securing ecologically significant natural areas through purchases, donations, conservation agreements or other mechanisms, and by achieving long-term stewardship through management plans and monitoring arrangements.

Vision: The Nature Conservancy of Canada will protect areas of biological diversity for their intrinsic value and for the benefit of future generations.

Objectives & Criteria

A series of Conservation Blueprints are used to determine which are the highest-priority sites for conservation in each ecoregion. To date, NCC has completed Conservation Blueprints for Canada's southern ecoregions, where the human footprint is heaviest and where conservation is most urgent. A Conservation Blueprint documents the portfolio of sites that, if conserved, will ensure the long-term survival of all viable native species and community types of the ecoregion.

Acquisition/Securement Priorities

Frontenac Arch, Eastern Lake Ontario Coast. We have a 4,000 acre goal for Frontenac by 2012 and an 800-acre goal for ELOC by 2015.

Tools, Resources & Capacities

GIS-based conservation planning. Depth of experience in land management and conservation easements.

Current Major Stewardship Projects

Approximately 30 properties in eastern Ontario including more than 5,000 acres of fee ownership. Major projects on the Frontenac Arch are Elbow Lake (1,100 acres) and Freeman (600 acres). Stewardship includes inventory, property management planning, invasive management, annual monitoring, easement monitoring.

Successful Projects

Elbow Lake acquired from Hewlett-Packard (2008). Freeman acquired in 2010. Sutherland-Bayly Nature Reserve adjacent to Frontenac Park (2008), Leland Wetlands (2010), Sugarbush Island (assisting RWLT) in 2010.

Wish list

A shared conservation strategy for the Frontenac Arch.

Parks Canada

<http://www.pc.gc.ca>

Mandate: On behalf of the people of Canada, we protect and present nationally significant examples of Canada's natural and cultural heritage, and foster public understanding, appreciation and enjoyment in ways that ensure the ecological and commemorative integrity of these places for present and future generations.

St. Lawrence Islands National Park

<http://www.pc.gc.ca/pn-np/on/lawren/index.aspx>

Contact information: Jeff Leggo, Park Superintendent

jeff.leggo@pc.gc.ca

613 923-5261

2 County Rd 5
Mallorytown, ON K0E 1R0

Mission: St. Lawrence Islands National Park is committed to preserving and celebrating the values and attributes of the Thousand Islands region, together with our local communities, for the enjoyment of present and future generations. In a rapidly urbanizing society, the park must be responsive to the needs and desires of urban Canadians, area residents, and traditional users.

Objectives & Criteria

Must be representative of the local environment.

Rideau Canal National Historic Site of Canada

<http://www.pc.gc.ca>

Vision: Preservation of this remarkable engineering achievement through the stewardship of Parks Canada in co-operation with all those who cherish its historic and natural values.

Ontario Heritage Trust

<http://www.heritagefdn.on.ca/>

Mission: To identify, preserve, protect and promote Ontario's rich and varied heritage for the benefit of present and future generations.

Objectives & Criteria

To preserve the heritage character and fabric of a property and to ensure good stewardship in the long term. Provincial significance, cost of administering the easement, heritage character of the property.

Ontario Parks

<http://www.ontarioparks.com>

Contact information: Corina Brdar
corina.brdar@ontario.ca
613-531-5716

Beechgrove Complex
51 Heakes Lane
Kingston, ON K7M 9B1

Mission: To protect significant natural and cultural resources in a system of parks and protected areas that is sustainable and provides opportunities for inspiration, enjoyment, and education; now and for future generations.

Objectives & Criteria

- To protect provincially significant elements of the natural and cultural landscape of Ontario.
- To permanently protect representative ecosystems, biodiversity and provincially significant elements of Ontario's natural and cultural heritage and to manage these areas to ensure that ecological integrity is maintained.

Acquisition/Securement Priorities

Refer to Charleston Lake Provincial Park and Frontenac Provincial Park.

Tools, Resources & Capacities

We use OMNR databases and layers to create maps with GIS. We do not regularly use GIS in an analysis capacity.

Current Major Stewardship Projects

Refer to Charleston Lake Provincial Park, Frontenac Provincial Park and Murphy's Point Provincial Park.

Successful Projects

Refer to Charleston Lake Provincial Park, Frontenac Provincial Park and Murphy's Point Provincial Park.

Privacy Issues

None.

Wish list

A regionally based group that cooperates on stewardship initiatives and shares information.
See: <http://ricelakeplains.ca/about.htm>.

Charleston Provincial Park

<http://www.ontarioparks.com/english/char.html>

Contact information: Ben Chabot
ben.chabot@ontario.ca
613-659-2065 ext. 224

148 Woodvale Rd.
Lansdowne, ON K0E 1L0

Mission: To protect significant natural and cultural resources in a system of parks and protected areas that is sustainable and provides opportunities for inspiration, enjoyment, and education; now and for future generations.

Objectives & Criteria

Park Goal: to protect Charleston Lake Provincial Parks exceptional natural and cultural heritage, and provide high quality educational and recreational experiences appropriate to and sustainable within the park's environment.

Acquisition/Securement Priorities

Any land close to the park that will add values to the park.

Tools, Resources & Capacities

We use OMNR databases and layers to create maps with GIS. We do not regularly use GIS in an analysis capacity.

Current Major Stewardship Projects

Sheffield Land Acquisition.

Successful Projects

Acquisition of Haskins property (2005).

Privacy Issues

None.

Wish list

A regionally based group that cooperates on stewardship initiatives and shares information.

See: <http://ricelakeplains.ca/about.htm>.

Frontenac Provincial Park

<http://www.ontarioparks.com/english/fron.html>

Contact information: Peter Dawson
peter.dawson@ontario.ca
general inquiries: frontenacpark@frontenacpark.ca
613-376-7607, general inquiries: 613-376-3489

P.O. Box 11,
1090 Salmon Lake Road,
Sydenham, ON K0H 2T0

Mission: To protect significant natural and cultural resources in a system of parks and protected areas that is sustainable and provides opportunities for inspiration, enjoyment, and education; now and for future generations.

Park Goal: To protect an outstanding natural environment of regional significance within the provincial parks system and to provide high quality, dispersed, low intensity backcountry recreation as an alternative to developed campgrounds and facility-intensive recreation.

Acquisition/Securement Priorities

Lands close to the park that will add values to the park

Tools, Resources & Capacities

We use OMNR databases and layers to create maps with GIS. We do not regularly use GIS in an analysis capacity.

Current Major Stewardship Projects

Gray Ratsnake monitoring, turtle monitoring, plant population monitoring, deer population effects monitoring. Frontenac Bird Studies - bird diversity study.

Successful Projects

Active wilderness skills training program

Privacy Issues

None.

Wish list

A regionally based group that cooperates on stewardship initiatives and shares information.

See: <http://ricelakeplains.ca/about.htm>.

Murphy's Point Provincial Park

<http://ontarioparks.com/English/murp.html>

Contact information: Curtis Thompson
curtis.thompson@ontario.ca
613-267-5060 ext. 224

Mission: To protect significant natural and cultural resources in a system of parks and protected areas that is sustainable and provides opportunities for inspiration, enjoyment, and education; now and for future generations.

Park Goal: To provide a wide range of medium to low intensity recreational opportunities which are compatible with the environment, and to protect and interpret the park's natural and cultural heritage resources so as to encourage in users an attitude of custodial responsibility towards resources.

Tools, Resources & Capacities

We use OMNR databases and layers to create maps with GIS. We do not regularly use GIS in an analysis capacity.

Current Major Stewardship Projects

Gray Ratsnake monitoring and education; monitoring of effects of hyperabundant deer populations; archaeology at two restored homestead sites

Successful Projects

Active NHE (Natural Heritage Education) program: Daily programs in summer months interpret unique geological and ecological features of the Frontenac Arch and South Shield, Cultural Heritage Features, including the Silver Queen Mine, a small-scale south shield mica mine, two restored homesteads, sawmill site, Rideau Canal

Privacy Issues

None.

Wish list

A regionally based group that cooperates on stewardship initiatives and shares information. See: <http://ricelakeplains.ca/about.htm>.

Ministry of Natural Resources- Kemptville

<http://www.mnr.gov.on.ca>

Contact information: 10 Campus Drive
Postal Bag 2002
Concession Road
Kemptville, ON K0G 1J0

(613) 258-8204

Mission: To manage our natural resources in an ecologically sustainable way to ensure that they are available for the enjoyment and use of future generations. The ministry is committed to conserving biodiversity and using natural resources in a sustainable manner.

Vision: A healthy environment that is naturally diverse and supports a high quality of life for the people of Ontario through sustainable development.

Ministry of Natural Resources - Southern Science and Information

<http://www.forestry.utoronto.ca/imsa/>

Contact information: Silvia Strobl
silvia.strobl@ontario.ca
705 755 3208

Ontario Ministry of Natural Resources
300 Water St., 4th floor
Peterborough, ON K97 8M5

SIB Mission: We collaborate with our clients by providing relevant expertise together with science and information products for natural resource management and reporting.

SIB Vision: The integration of evidence-based and local contextual knowledge is the foundation of natural resource management activities and decisions.

Objectives & Criteria

We supply pertinent scientific information to resource managers who must decide how to best protect and sustainably use Ontario's lands, waters, forests, fish and wildlife. Our goals are:

- To monitor the state of any of Ontario's natural resources to ensure healthy sustainable landscapes, fish and wildlife populations.
- To interpret and apply the best possible science to support natural resource policy and management decisions.
- To communicate science information to our clients.
- To explain the State of Resources to the public.

Acquisition/Securement Priorities

Southern Science provides science support to MNR's land acquisition program by helping to determine the ecological value of lands being considered for acquisition.

Tools, Resources & Capacities

NHS Modelling, Pre-settlement Vegetation Mapping, Vegetation and Soils Sampling Methodologies, Habitat Mapping, Broadscale Fisheries Monitoring, Modern Data Capture Techniques, Mapping of shoreline alterations, State of Resources Reporting

Current Major Stewardship Projects

Natural Heritage System Projects:

- Sustaining what we value 6e10/6e11 (in progress)
- Prince Edward 6e15 (in progress)
- Sydenham Watershed (completed Pilot)
- Re-leaf Project (in progress)
- Niagara Peninsula CA (in progress)

Successful Projects

- Simcoe County Natural Heritage System
- 7e5 Natural Heritage System Pilot project

Privacy Issues

FIPPA compliance part of everyday business

Wish list

Wish for a network of Natural Heritage Systems across Southern Ontario protected through land use planning and which connect not only to each other but to the Boreal Shield to the North and the United States to the South.

Ministry of Natural Resources - Southern Region Planning Unit

<http://www.mnr.gov.on.ca/en/index.html>

Contact information: Steve Voros
steve.voros@ontario.ca
705 755-3251

Ontario Ministry of Natural Resources
300 Water St., 4th floor
Peterborough, ON K97 8M5

Southern Region **Mission:** Conservation of biodiversity and managing our natural resource sin a sustainable manner

Southern Region **Vision:** A healthy and naturally diverse environment that supports and contributes to sustainable development in Ontario

Objectives & Criteria

To strengthen priority data collection, analysis and information management to inform resource management.

To manage natural resources to optimize the balance of benefits.

To identify, protect, enhance and restore natural heritage systems, features and values.

Acquisition/Securement Priorities

Region works with MNR's land acquisition program and helps them determine priority areas.

Acquisition of areas which are ANSIs or which are indicated as priorities through NHS modeling would be some of the areas suggested for acquisition.

Tools, Resources & Capacities

NHS Modeling, Municipal Planning expertise, Conservation Reserves and ANSI program, Communications/Consultation

Current Major Stewardship Projects

Natural Heritage System Projects:

- Sustaining what we value 6e10/6e11 (in progress)
- Prince Edward 6e15 (in progress)
- Sydenham Watershed (completed Pilot)
- Re-leaf Project (in progress)
- Niagara Peninsual Ca (just starting)

Successful Projects

- Simcoe County Natural Heritage System
- 7e5 Natural Heritage System Pilot project

Privacy Issues

FIPPA compliance part of everyday business

Wish list

Wish for a network of Natural Heritage Systems across Southern Ontario protected through land use planning and which connect not only to each other but to the Boreal Shield to the North and the United States to the South.

Algonquin To Adirondack Conservation Association

<http://www.a2alink.org/index.html>

Contact information: Emily Conger
emconger@kingston.net, general inquiries: president@a2alink.org
613-387-3889, general inquiries: 613-659-4824

19 Reynolds Road
Lansdowne, ON
K0E 1L0

Mission: We will provide leadership and facilitate collaboration among partners to restore, enhance, and maintain ecological connectivity, ecosystem function, and native biodiversity, while respecting sustainable human land uses in the Algonquin to Adirondacks region. We will work at international, national, regional, and local levels to develop strategic and site-specific initiatives to achieve connectivity.

Vision: We envision an Algonquin to Adirondacks region that preserves a rich mosaic of interconnecting habitats which sustain and enhance ecological integrity in a way that respects the people who live here, and which functions as the critical link in maintaining connectivity in Eastern North America.

Objectives & Criteria

- To work with and through governmental and non-governmental partners to accomplish our Mission.
- To support, promote and initiate action to sustain a functional habitat of connected natural areas across highlands, valleys, rivers, wetlands and human barriers and boundaries that will enhance the survival and movement of healthy wildlife between the existing protection provided by Algonquin and Adirondack Parks.
- To consult with, learn from, inform, and work with landowners, potential partners and the public in support of the above.
- To conduct, support and recommend research and disseminate research results.
- To advocate on behalf of and represent the interests of members with policy and decision-makers.

Acquisition/securement priorities

A2A works to help partners secure lands that promote connectivity

Tools, resources & capacities

Volunteer Board with one Youth Employment Internship Program Intern at this time.

Current major stewardship projects

Gananoque River Watershed Community Stewardship Project (in 4th year)

Successful Projects

Landowners' Resources Website, Biodigester Workshop for Farmers (Sustainability for the Family Farm), Conservation Values Mapping, Speaking events (~30), 401 Porosity Study, Speakers Forums, Gananoque River Watershed Community Stewardship Project (in 4th year)

Privacy Issues

None

Wish list

Enough funding to hire a full time Executive Director, more U.S. based partners and more extensive U.S. membership.

Ducks Unlimited

<http://www.ducks.ca/>

Contact information: Erling Armson
e_armson@ducks.ca
613-389-0418 ext 123

Mission: All Ducks Unlimited organizations conserve, restore and manage wetlands and associated habitats for North America's waterfowl. These habitats also benefit other wildlife and people.

Vision (DUC Canada): DUC is working to achieve a mosaic of natural, restored and managed landscapes capable of perpetually sustaining populations of waterfowl and other wildlife. Within the next 25 years, DUC envisions Canada as a prosperous nation that can sustain use by people and wildlife without endangering the amount or functions of its natural lands.

Objectives & Criteria

Our conservation efforts are concentrated on key threatened landscapes where they will have the greatest returns possible. This includes Wetland Rehabilitation and Wetland Securement.

Acquisition/Securement Priorities

Acquisition and securement priorities are significant coastal and inland wetlands with significant waterfowl values and threats.

Tools, Resources & Capacities

GIS, implementation staff, etc.

Current Major Stewardship Projects

Wetland conservation and restoration projects.

Privacy Issues

Our project landowners

Wish list

Significant funding to deliver many more wetland conservation projects with partners.

Eastern Ontario Model Forest

<http://www.eomf.on.ca>

Naturalized Knowledge Systems principles, as embodied in the Haudenosaunee culture, serve as the foundation for the EOMF's **vision** and governance structure. The principles of respect, equity and empowerment are embraced as fundamental in nurturing effective and enduring partnerships. Our vision of forests for seven generations is a sustainable landscape valued by all communities.

Objectives & Criteria

EOMC focuses much of its effort within a core area of eastern Ontario, however, work and involvement also extends beyond this core area.

Friends of Charleston Lake Park

<http://www.friendsofcharlestonlake.ca>

Contact information: Steve Page
stevepage@kos.net
613-547-4112

415 Regent Street
Kingston, ON K7K 5R2

Mission: To further the public's awareness, education, and understanding of the resources of Charleston Lake Provincial Park by sponsoring publications and research, supplementing Park programs, and stimulating community interest.

Objectives & Criteria

The same as the Park's.

Acquisition/Securement Priorities

The same as the Park's.

Tools, Resources & Capacities

Small capacity - small membership, small financial base.

Successful Projects

Helped raise money for the purchase of the Sheffield property, which will become part of the Park.

Privacy Issues

Yes.

Friends of Murphy's Point Provincial Park

<http://www.friendsofmurphyspoint.ca>

Mandate: to further the public's awareness, education and understanding of the geological, historical/archaeological, cultural and biological resources of Murphy's Point Provincial Park by: undertaking specific educational and interpretive projects related to the park, conducting research about the park's natural, cultural and historical resources with a view to disseminating findings to the public, supporting existing educational, interpretive and recreational programs for the public's benefit, and stimulating community interest and understanding of the park to help ensure its protection.

Frontenac Arch Biosphere Reserve

<http://www.fabr.ca>

Contact information: Don Ross
Don@fabr.ca, general inquiries: info@fabr.ca
(613) 659-4824

19 Reynolds Rd., RR1
Lansdowne, ON K0E 1L0

Mission: The Frontenac Arch Biosphere's Mission is to encourage people to work together toward a more sustainable way of life.

Vision: The Frontenac Arch Biosphere will be known by all who live and visit here as a world-class example of a successful sustainable community. We will celebrate our natural, economic and human qualities and forge a new way of working, living and growing together.

Objectives & Criteria

To protect this area of globally significant biodiversity through sustainable community development, as per our UNESCO mandate.

Acquisition/Securement Priorities

N/A

Tools, Resources & Capacities

As a non-government organization that functions as a network of community partners, we are able to bring a non-government facilitation role to all of our projects.

Current Major Stewardship Projects

- Facilitation of municipal ICSPs.
- Series of workshops on sustainable community development.

Successful Projects

- Developed a National Model of Sustainable Tourism.
- Established a 5 year Queen's University State of the Biosphere course on measurements of resilience & development.
- FAB designated as the world's 9th Geotourism. Sustainable Destination under The National Geographic Society.
- Created FAB Educators Network of parks, museums & school boards.
- And others- please see our website for an archive of projects and programmes.

Privacy Issues

Wish list

A conservation strategy for the Biosphere region.

Kingston Field Naturalists

<http://www.kingstonfieldnaturalists.org>

Contact information: Janis Grant
janis.grant@kos.net

Objectives

- To acquire, record and disseminate knowledge of natural history.
- To stimulate public interest in nature and in the protection and preservation of wildlife and natural habitats.
- To acquire, receive and hold lands for the purpose of preserving their natural flora and fauna and assist other organizations and individuals to do likewise.

Current Major Stewardship Projects

- Population studies of Short Eared Owls on Wolfe and Amherst Islands.
- Population studies of Loggerhead Shrikes in the Kingston area.
- Increase available chimneys and other nesting sites for Chimney Swifts.
- Development of a management plan for the Owl Woods on Amherst Island.
- A work shop on bird migration over Lake Ontario to be held on March 8, 2011.

Ontario Nature

<http://www.ontarionature.org>

Mission: To protect wild species and wild spaces through conservation, education and public engagement.

Objectives & Criteria

To protect the province's best remaining examples of imperiled and vulnerable habitats. Current focuses include: Heritage Woodlands, Great Lakes Shorelines and Alvars.

Queen's University Biology Station

<http://www.queensu.ca/qubs>

Contact information: Frank Phelan
phelanf@queensu.ca
Tel 613-359-5629 Fax 613-359-6558

280 Queen's Univ. Rd., RR#1
Elgin, ON K0G 1E0

Part of Queen's University **Mandate** - to provide opportunities for teaching and research in biology and the environmental sciences.

Objectives & Criteria

Must be close to the Biological Station, must poses varied habitat features.

Acquisition/Securement Priorities

Representative properties of the Frontenac Arch/Rideau Lakes significant land base to allow natural processes to occur with minimum intervention.

Tools, Resources & Capacities

In-house GIS/GPS developing research data repository/archive access to student labour/interest.

Current Major Stewardship Projects

Significant increase in public outreach efforts.

Successful Projects

Many individual research projects or specific species, habitats, communities development of GIS/GPS database.

Privacy Issues

Yes - available now on QUBS website

Queen's University Environmental Studies

<http://www.queensu.ca/ensc>

Contact information: Ryan Danby
ryan.danby@queensu.ca
613.533.6000 ext. 78540

School of Environmental Studies
Queen's University
Kingston, ON K7L 3N6

Mission: Education and research in environmental science and sustainable development

Successful Projects

Course, ENSC430, with exclusive focus on addressing the state of the Frontenac Arch Bioregion. Also several research projects with explicit focus on conservation and management in the region.

South Frontenac Natural Environmental Committee

<http://www.township.southfrontenac.on.ca/node/106>

Contact information: Ron Hipfner
hipfner@sympatico.ca
613-376-6617

PO Box 18
Sydenham, ON K0H 2T0

Vision: Future generations of South Frontenac citizens will have a clean and healthy environment as both a right and a responsibility.

Acquisition/Securement Priorities

The committee will undertake programs and make recommendations to Council designed to achieve the following: Conservation of Nature, Management of Natural Resources, Environmental Protection, Environmental Rehabilitation, Environmental Monitoring, Environmental Education and Regional Co-operation.

Tools, Resources & Capacities

Access to the township's GIS, and have maps generated from the data.

Current Major Stewardship Projects

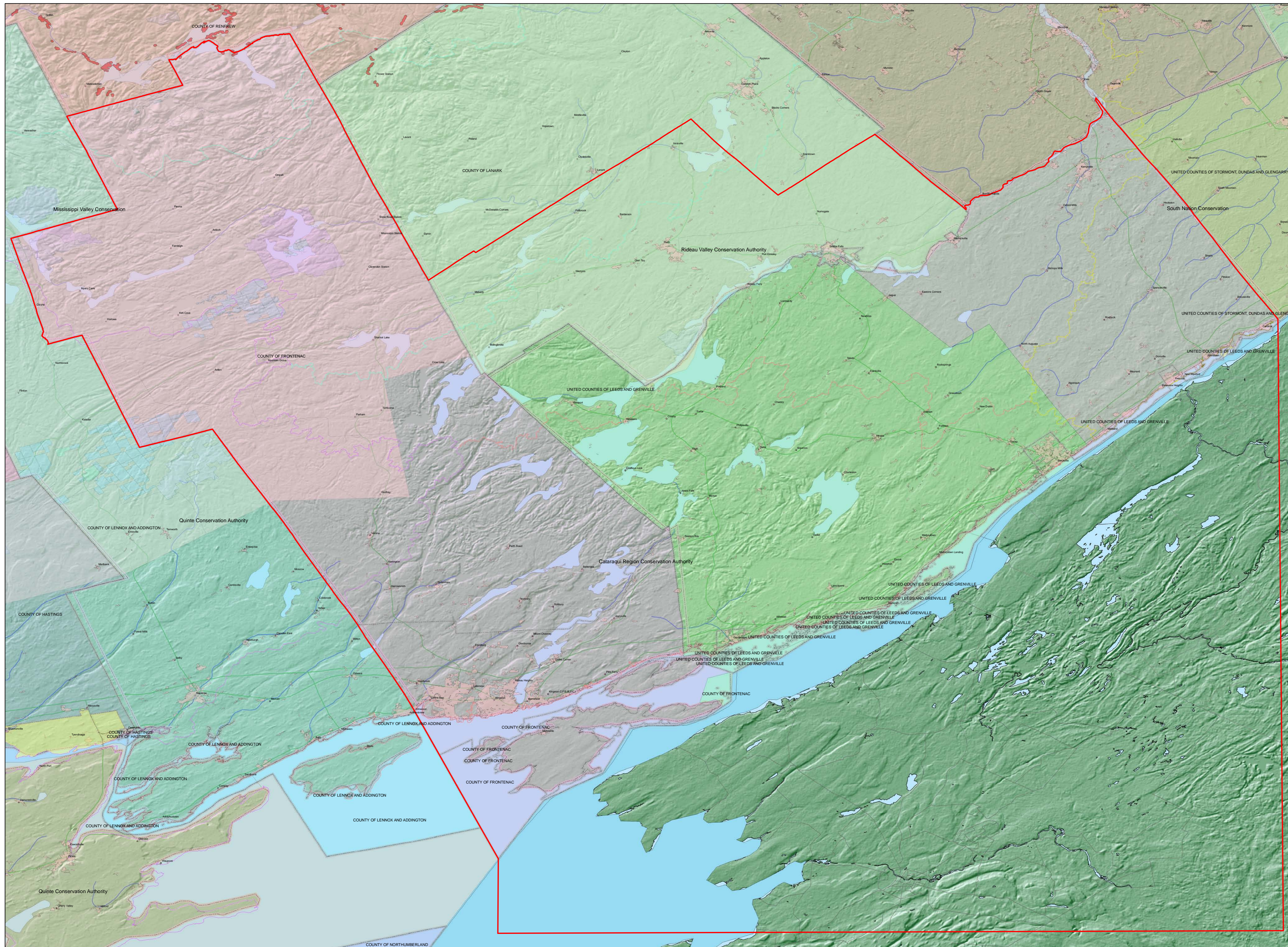
Annual sale of native trees, annual "Pitch-In" support, improvement of township policies and bylaws respecting Endangered Species, ongoing public education via a speaker's series.

Successful Projects

Erection of "turtle signs" along roadways, distribution of hundreds of blue bird boxes, SF tender documents now require contractors to acknowledge our Endangered Species and their protection.

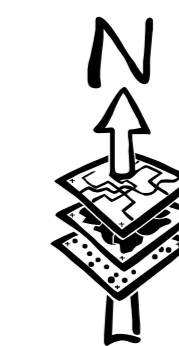
Wish list

We would like to have a place where sightings of endangered species could be mapped so that their habitats and corridors could be identified and protected.



Legend

- ConservationBoundary
- Geo Names
- First Nations
- Cottage Areas
- Built-Up Areas
- County
- Conservation Area Admin**
- <all other values>
- NAME**
- Cataraqui Region Conservation Authority
- Crowe Valley Conservation
- Lower Trent Region Conservation Authority
- Mississippi Valley Conservation
- Quinte Conservation Authority
- Rideau Valley Conservation Authority
- South Nation Conservation
- Stewardship Council**
- <all other values>
- LABEL**
- Bancroft Area Stewardship Council
- Community Stewardship Council of Lanark County
- Frontenac Stewardship Council
- Grenville Land Stewardship Council
- Hastings Stewardship Council
- Leeds County Stewardship Council
- Lennox & Addington Stewardship Council
- Northumberland Stewardship Council
- Ottawa Stewardship Council
- Prescott & Russell Stewardship Council
- Prince Edward Stewardship Council
- Renfrew County Stewardship Program
- Stormont, Dundas & Glengarry Resource Stewardship
- CLUPA Primary Landuse**
- DESIG_ENG**
- Conservation Reserve
- Enhanced Management Area
- Forest Reserve
- General Use Area
- Provincial Park



1:300,000 1 cm = 3 km



Conservation Strategy Administrative Areas